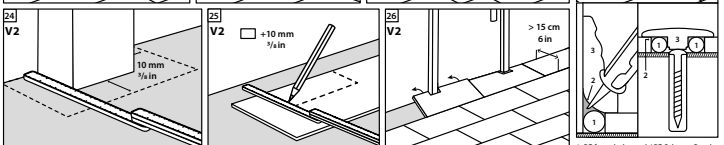
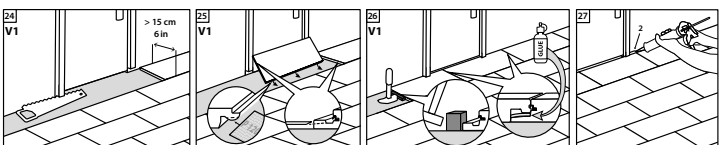
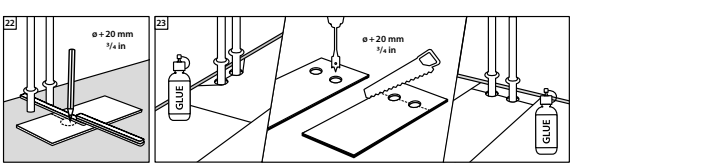
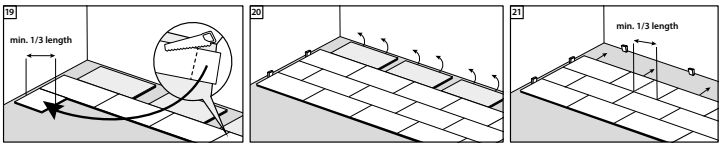
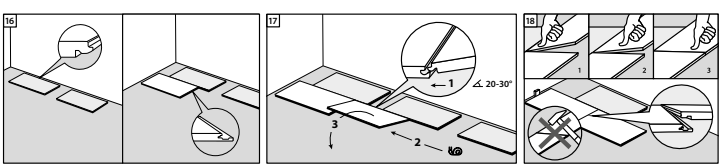
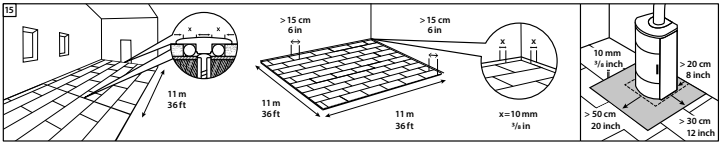
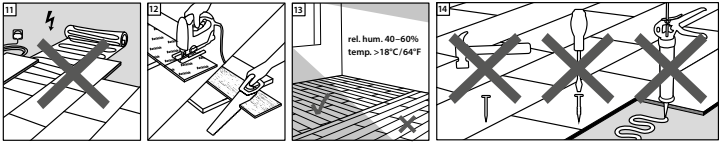
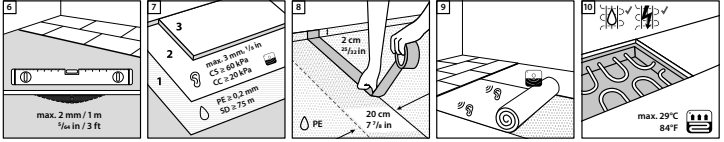


Verlegeanleitung Laminatboden

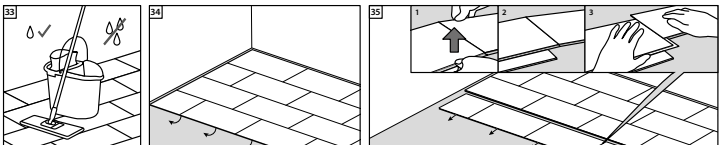
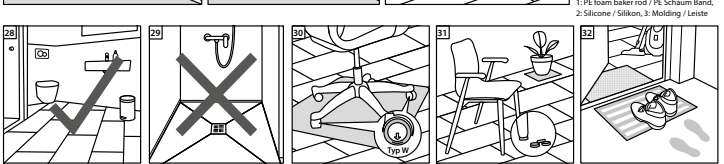
Verlegesystem Megaloc aqua protect im Fliesenformat ohne integrierter Trittschalldämmung



Rev. 2.2 / 11.23



1: PE foam baker rod / PE Schaum Band, 2: Silicone / Silikon, 3: Molding / Leiste



- QR-Code zu den
- Verlegeanleitungen in Textform
 - Reinigungs- und Pflegehinweisen
 - Technischen Datenblättern
 - Produktzertifikaten